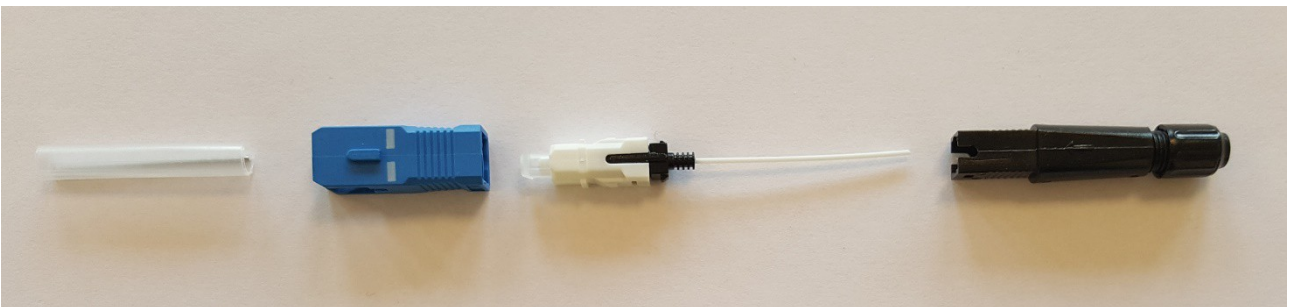


EasySplicer

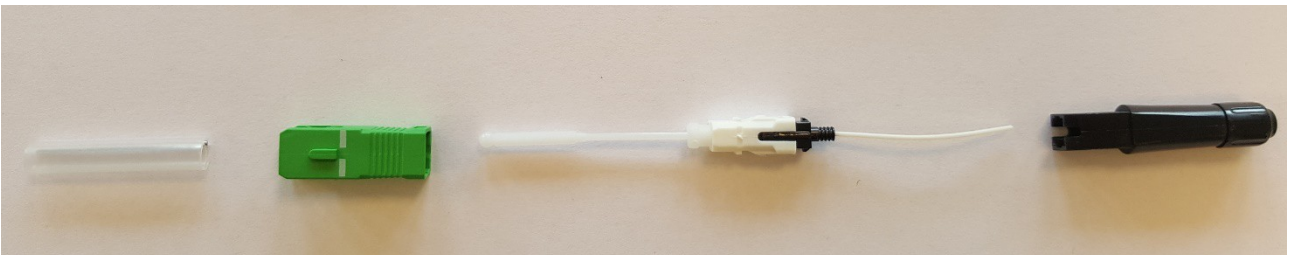
How to splice SOC-SC Connectors

The different parts that makes up the SOC connector.

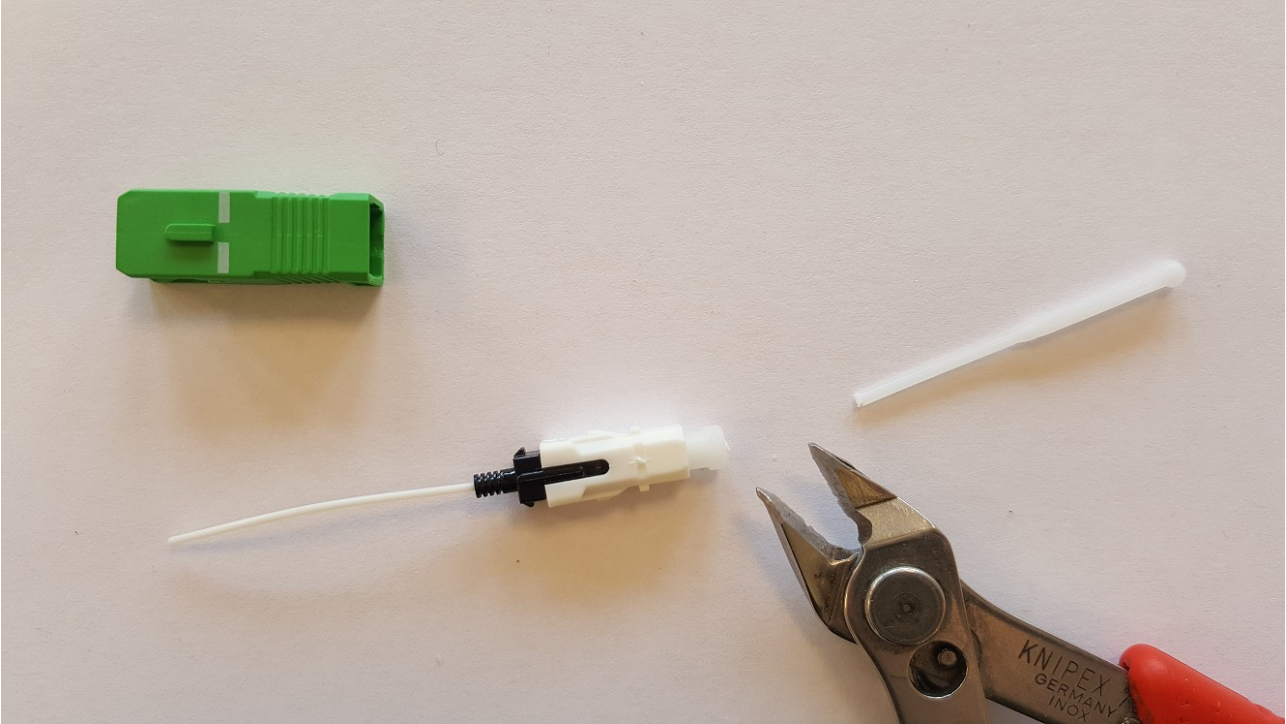
SC-UPC



SC-APC



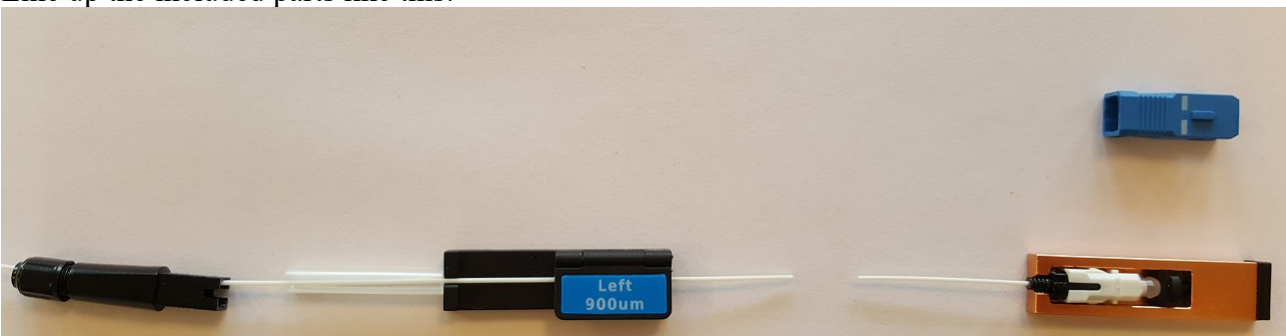
If the extension is present, please cut it off so that the connector fits into the holder.



Insert into the SOC-holder.



Line up the included parts like this:



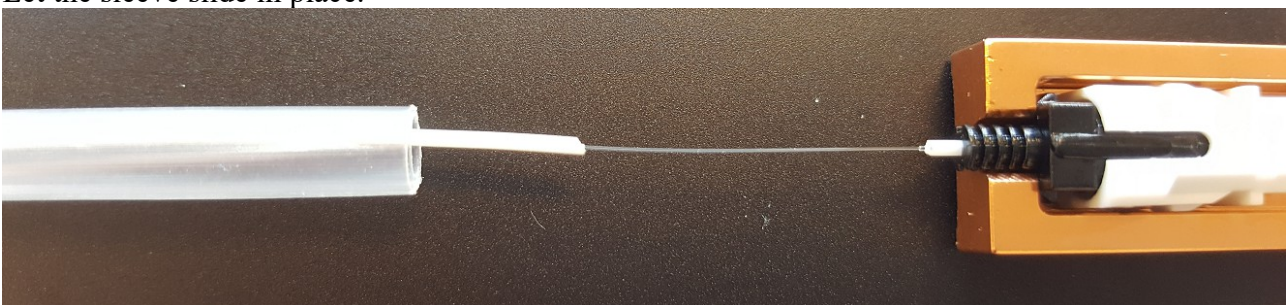
After stripping, cleaning and cleaving of both sides.



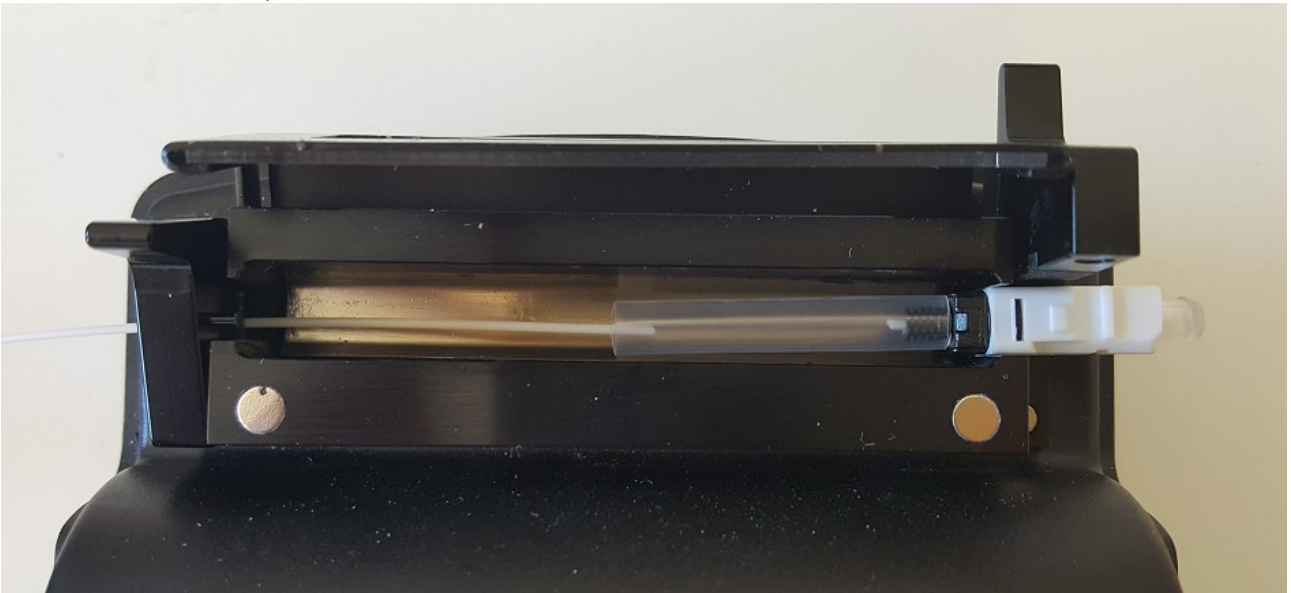
Insert into the splicer like this. And splice.



After splicing, open the SOC holder and lift the connector out of the holder.
Let the sleeve slide in place.



Check the oven time, it should be set for 60 seconds. Insert the connector like this into the oven.



When oven is finished, let the connector rest for at least 30 seconds to finish crimping and also cool a bit so that the sleeve hardens and can be handled safely before removing it from the oven.

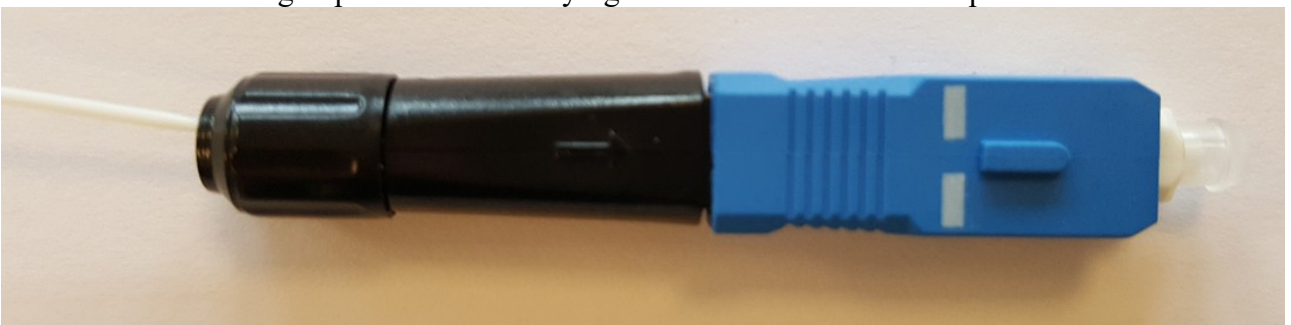
Slide the housing in place.



Push together housing and connector until it clicks.



Push the outer housing in place and carefully tighten the relief to the left in picture.



Done.